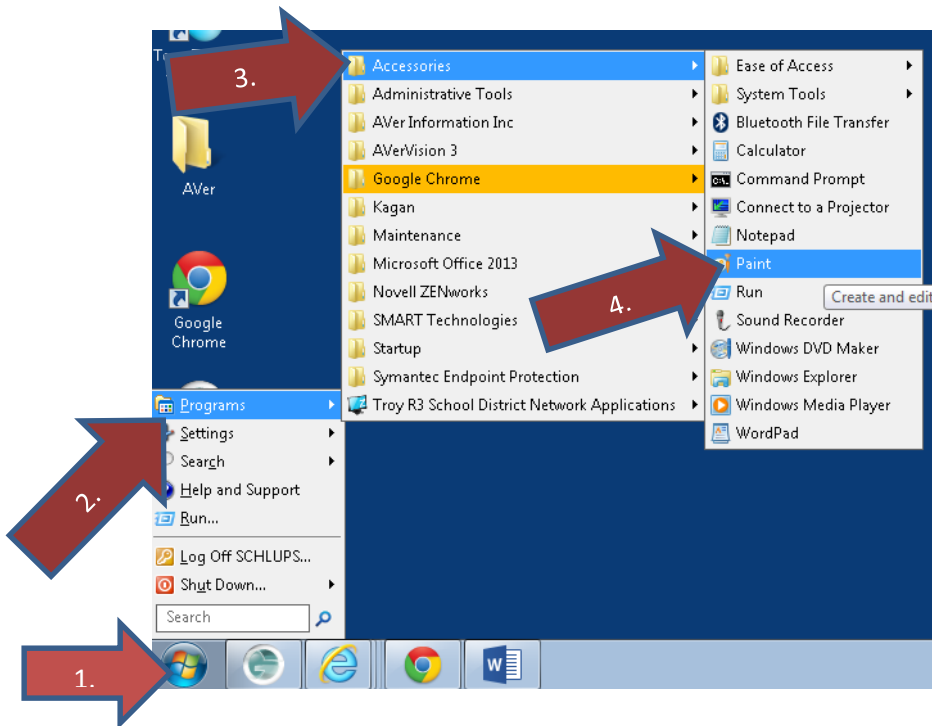
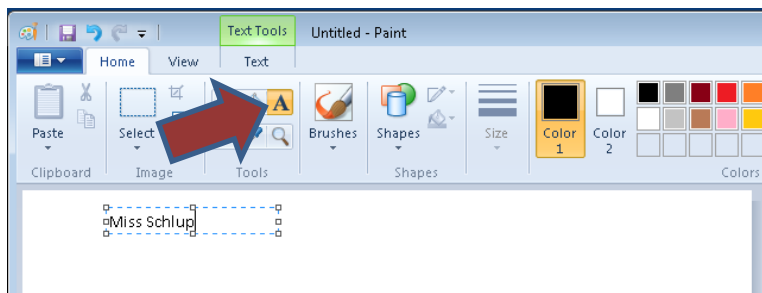


Making a compass rose using Paint.Net

1. Click on **Start, Programs, Accessories** and **Paint** from the **start up** list.

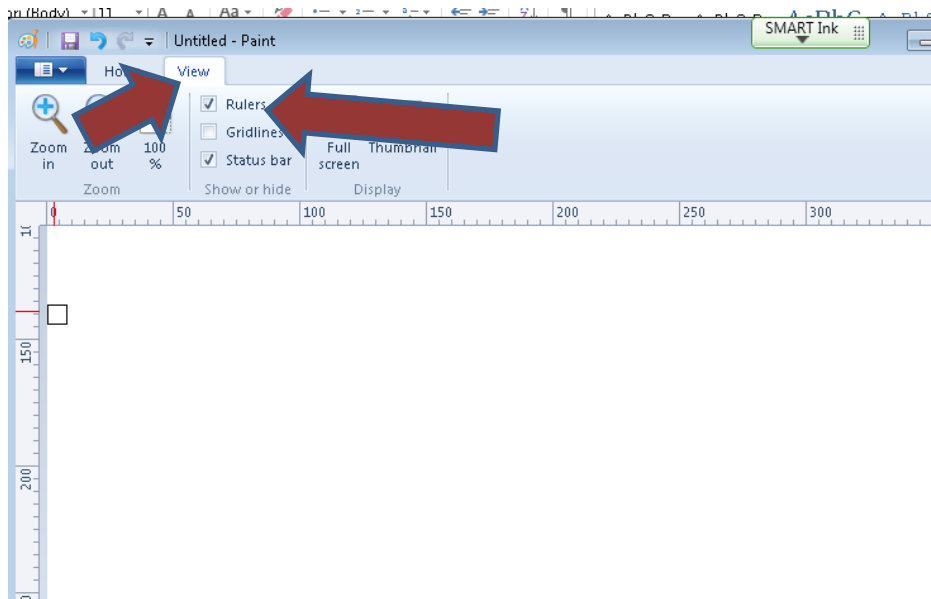


2. Click on the "A" and then click on the top of the white canvas until you see the cursor as a blue box.
3. Type your name.

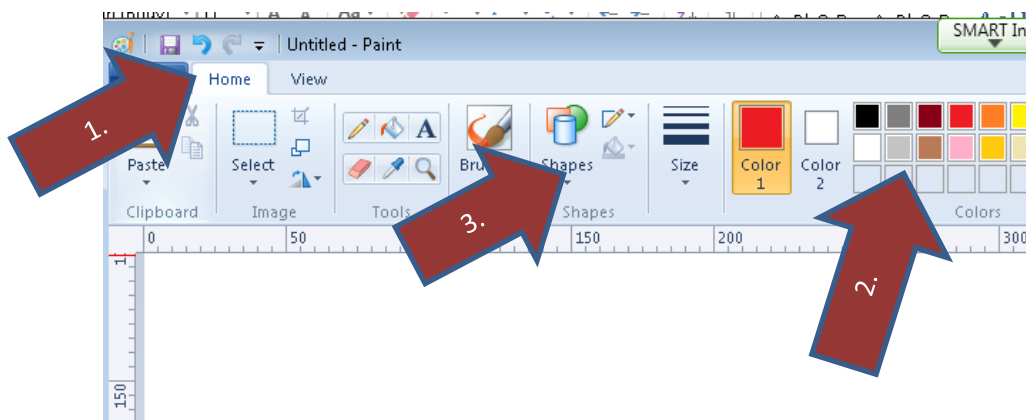


Compass Rose Directions

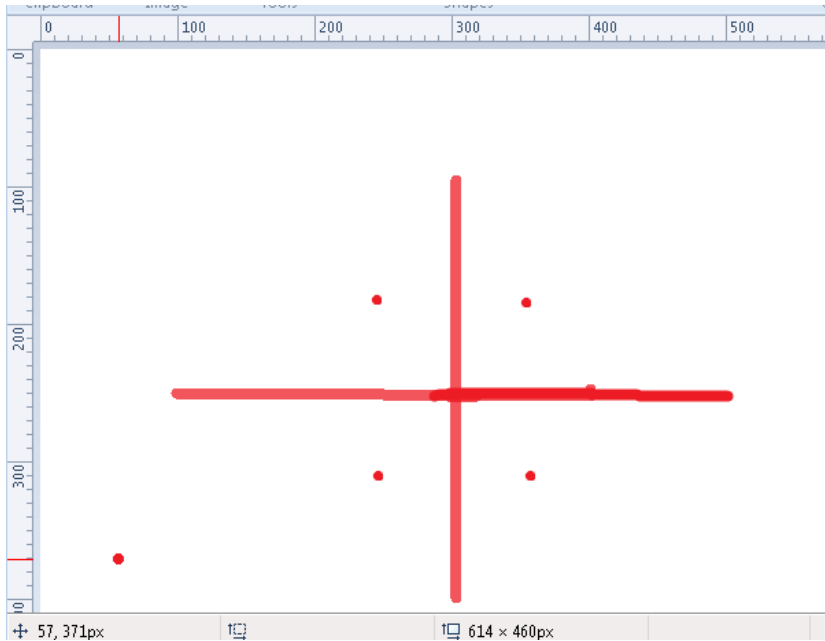
4. Click on the view tab icon at the top of the page.
Then make sure the gridlines box is checked.



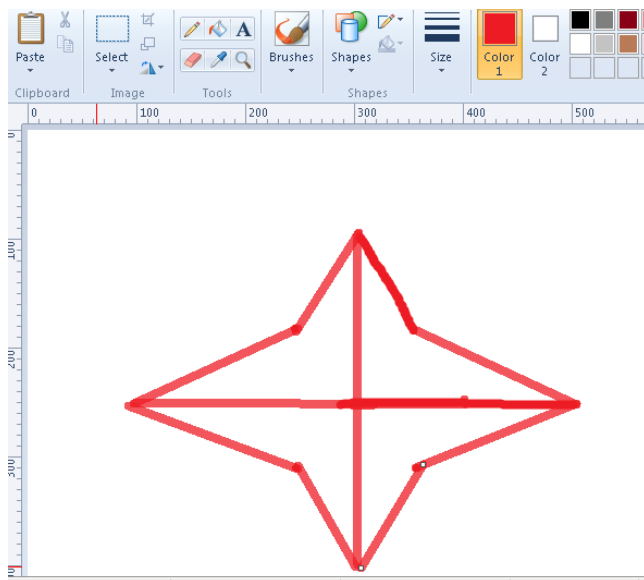
5. Click on the home tab, select a color and select the line tool from the shapes menu.



6. Draw a cross about three inches in each direction.
Put four dots using the paintbrush tool about half an inch away from the interior of the cross.

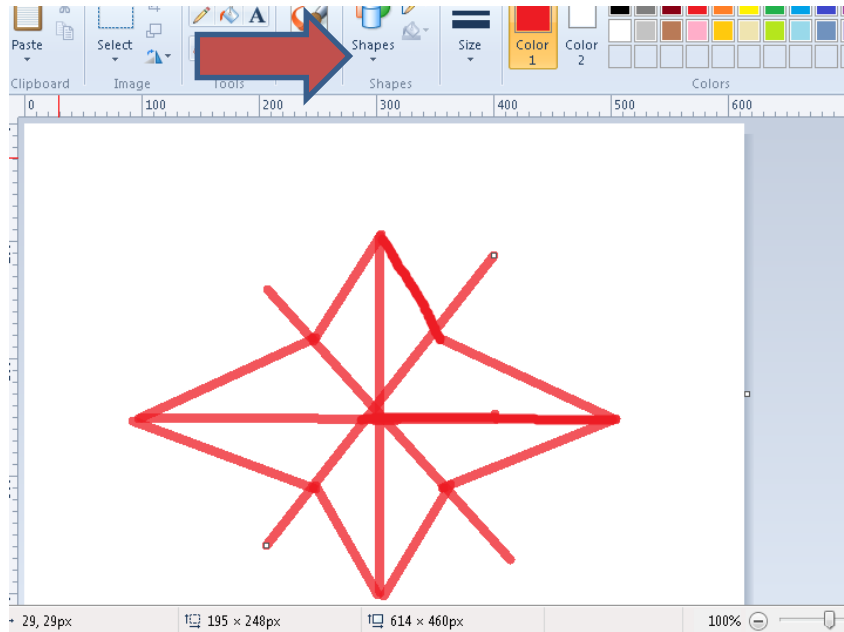


7. Connect the dots to the end of your lines with the LINE tool. Make sure there are no breaks in your lines.

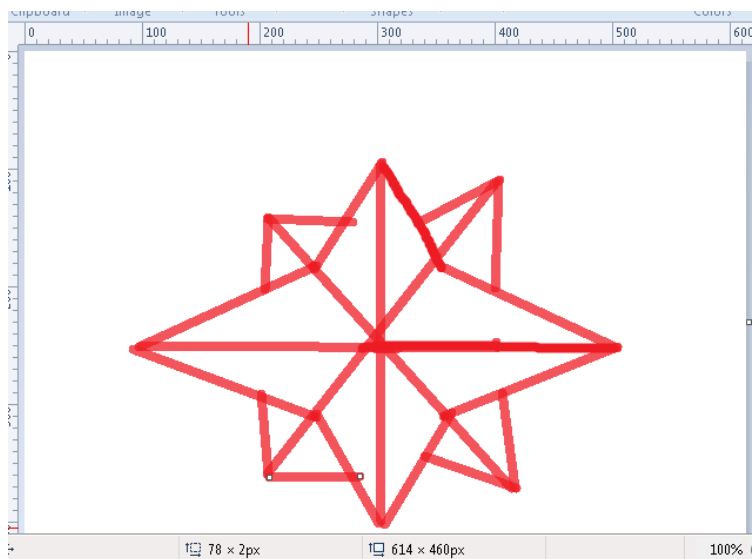


Compass Rose Directions

8. Click on the line tool and make a 2 inch x through the center of your compass rose.

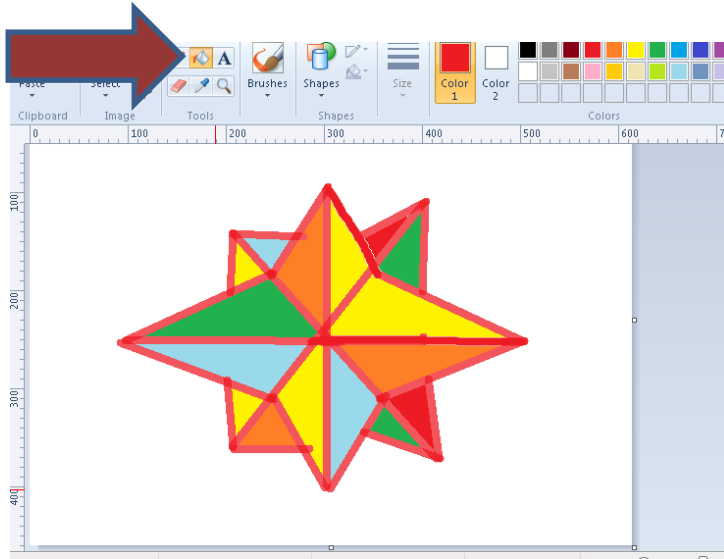


9. Connect the ends of your x to the middle of the lines nearest them.



Compass Rose Directions

- Click on the fill button and fill each section with a color of your choice.



- Select the text tool and click next to each point, placing the directions in the correct position.

